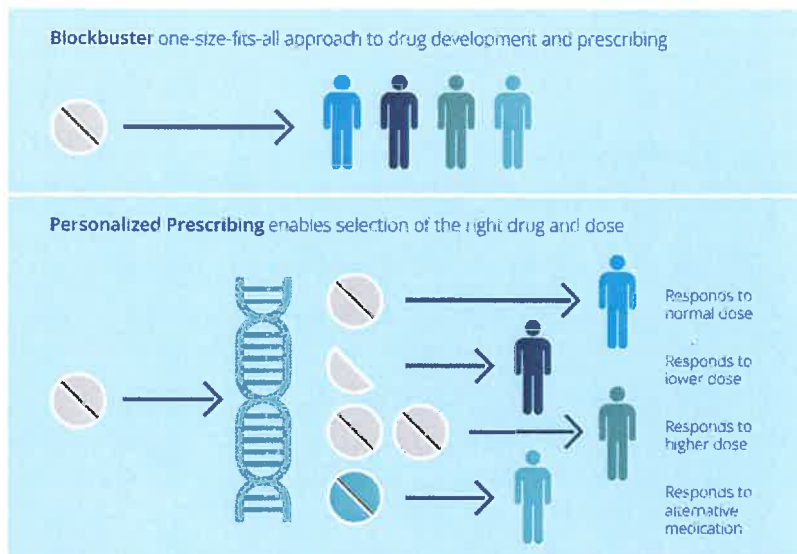


Dear Provider:

Your patient has expressed an interest in personalized medicine, specifically in Genelex drug-sensitivity pharmacogenetic testing. Genelex helps you achieve optimal prescribing by placing the growing body of evidence surrounding pharmacogenetics at your fingertips. Our team does the research for you by utilizing the unique, patented YouScript Personalized Prescribing Software.

More than 90 percent of the population has genetic variations that affect how they process many common medications. Having this information available helps you to select the right medication and the right dose for your patient, thus minimizing trial-and-error prescribing.



YouScript is a clinical decision support tool that optimizes medication regimens for patients based on their genetic code. This unique, award winning medication management software analyzes a patient's genetics and their medication list to determine if he or she is at risk for any adverse drug events or therapeutic failures. If a potentially harmful drug-drug, drug-gene or drug-drug-gene interaction is detected, the software provides dosing recommendations or alternative medications to help mitigate the interaction.

Pharmacogenetic testing is particularly significant for patients who are:

- Older than 65
- Taking more than five medications (Polypharmacy)
- Taking FDA-approved medications with pharmacogenetic information in their labeling (<http://www.fda.gov/drugs/scienceresearch/researchareas/pharmacogenetics/ucm083378.htm>)

- Frequently reporting adverse effects to their medications or not responding to their medications
- Wary of standard medication doses based on prior experiences

YouScript Poly-Drug/Gene, Poly-Drug/Drug Interaction Software:

Once a patient's DNA is tested through our simple, painless mouth swab or a blood sample, we enter their results into a personal account that can be accessed through the Genelex website secure portal. The software will allow you to determine medications that are not a good fit, as well as recommended dose adjustments and potential alternatives. This tool plays a major role in reducing trial-and-error prescribing and gives the patient a better chance of success on their prescribed regimen.

Pharmacist Support:

If you submit a current list of medications, herbals, and OTCs with the initial sample, we will add this information to the patient's genetic profile. If significant interaction risk is detected, our onsite clinical pharmacists will provide recommendations to help you optimize the medication regimen. They are also available by phone or email should you have any questions.

Testing:

The process couldn't be simpler; *we provide you with free testing supplies and prepaid shipping to return samples to our laboratory.* Testing results can then be sent via secure email or faxed to your office.

Genelex is pleased to deliver this opportunity to help you bring this technology to your patients. If you have any questions regarding any of our available tests, please feel free to contact us at [800 TEST-DNA \(800-837-8362\)](tel:800-837-8362) or info@genelex.com.

Best Regards,

A handwritten signature in blue ink, appearing to read "C. Anderson".

Chief Executive Officer

Genelex